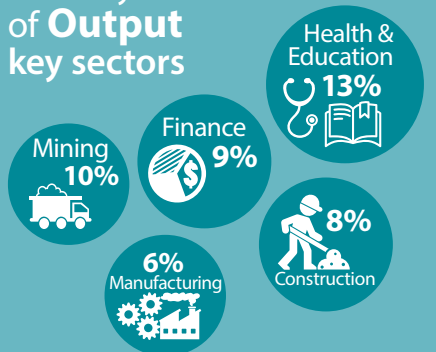


# Composition of the Australian Economy

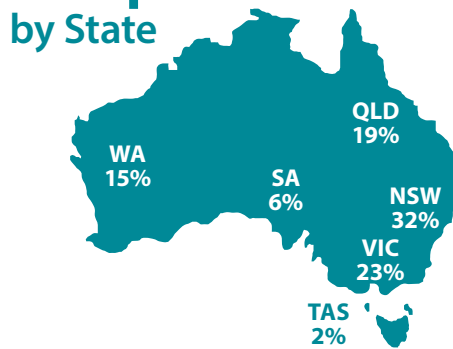
## SNAPSHOT 8 April 2020



### Industry Share of Output key sectors



### Output Share by State



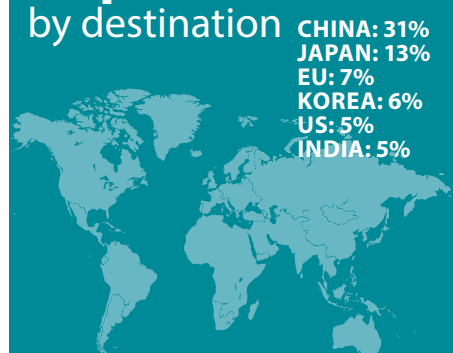
Population  
**25 million**  
1.5% annual growth

### Export Share by type

Resources: **57%**  
Services: **21%**  
Rural: **10%**  
Manufactured: **10%**



### Export Share by destination



### Employment to population ratio

**63%**



Average Price of Residential Dwellings  
**\$691,000**



### Household wealth

as a share of income



**798%**

### Household debt

as a share of income

**187%**



Data in this snapshot are the latest available as at 8 April 2020.

 [rba.gov.au](http://rba.gov.au)

 @RBAInfo

 @ReserveBankAU



RESERVE BANK OF AUSTRALIA